



SOCIAL DETERMINANTS OF HEALTH SAN DIEGO COUNTY

*By Elizabeth Hernandez, Ph.D.
Acting Director, Public Health Services
County of San Diego*

December 1, 2021



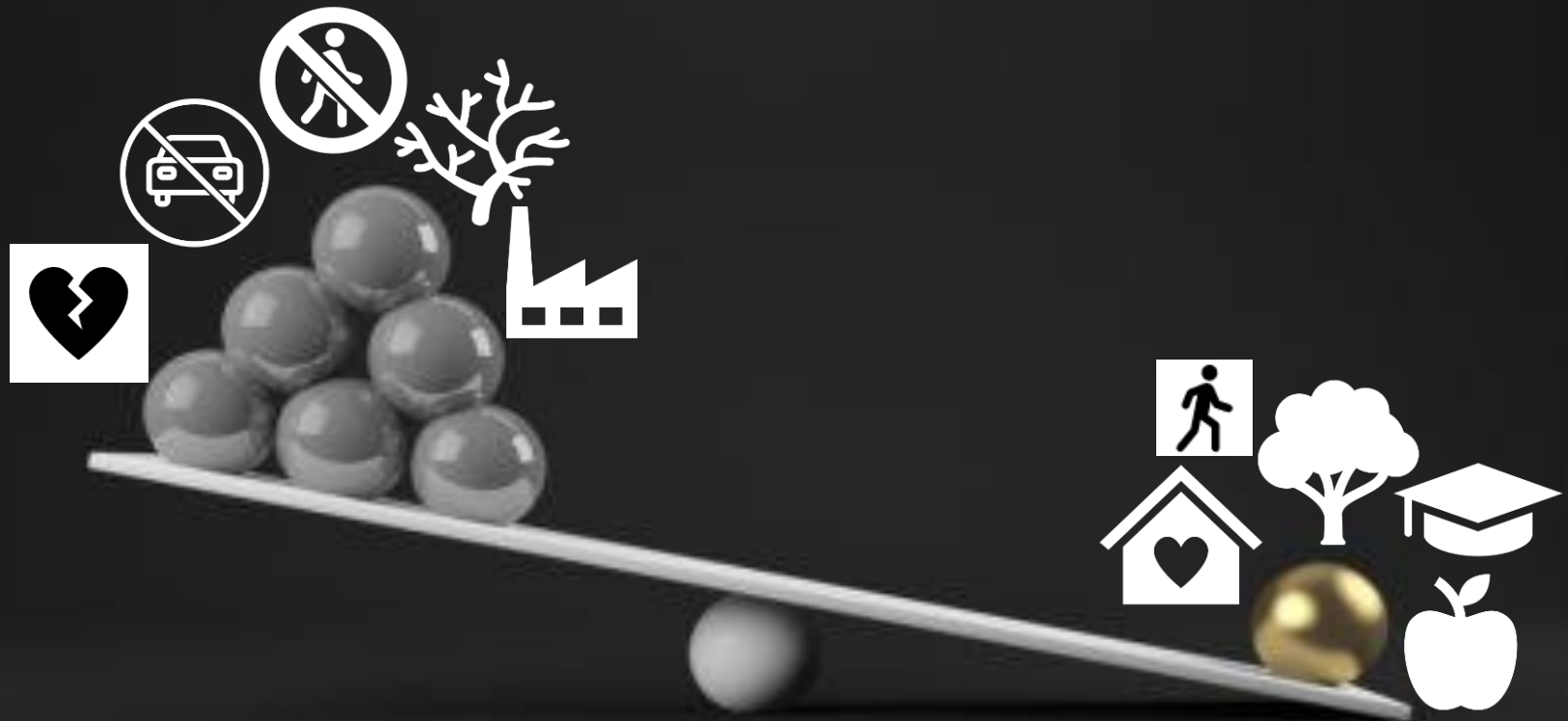
SOCIAL DETERMINANTS OF HEALTH



SOCIAL DETERMINANTS OF HEALTH



LIVE WELL
SAN DIEGO



3-4-50: CHRONIC DISEASE DEATHS



3
Lead To

Behaviors

No Physical Activity
Poor Diet
Tobacco Use

4
Result in

Diseases

Cancer
Heart Disease & Stroke
Type 2 Diabetes
Lung Disease

Over 50

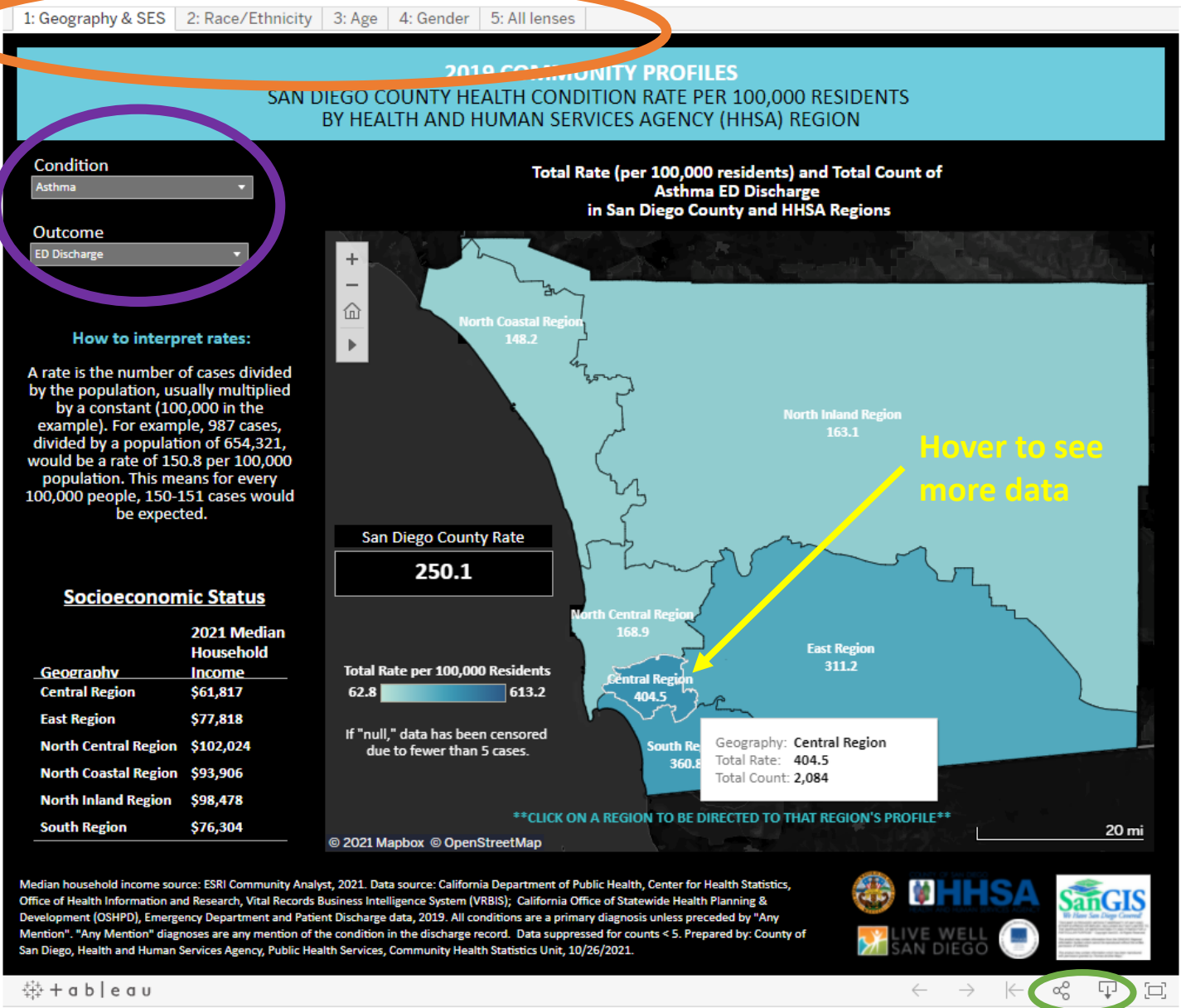
Percent

Of Deaths
In San Diego

County Online Community Profiles

Navigate to data by various lenses of health equity

Use the drop-down arrows to filter by condition and outcome



Share or download

Chronic Lower Respiratory Disease

2019 COMMUNITY PROFILES

SAN DIEGO COUNTY HEALTH CONDITION RATE PER 100,000 RESIDENTS BY HEALTH AND HUMAN SERVICES AGENCY (HHSA) REGION

Condition
COPD/Chronic Lower Respi..

Outcome
Hospitalization

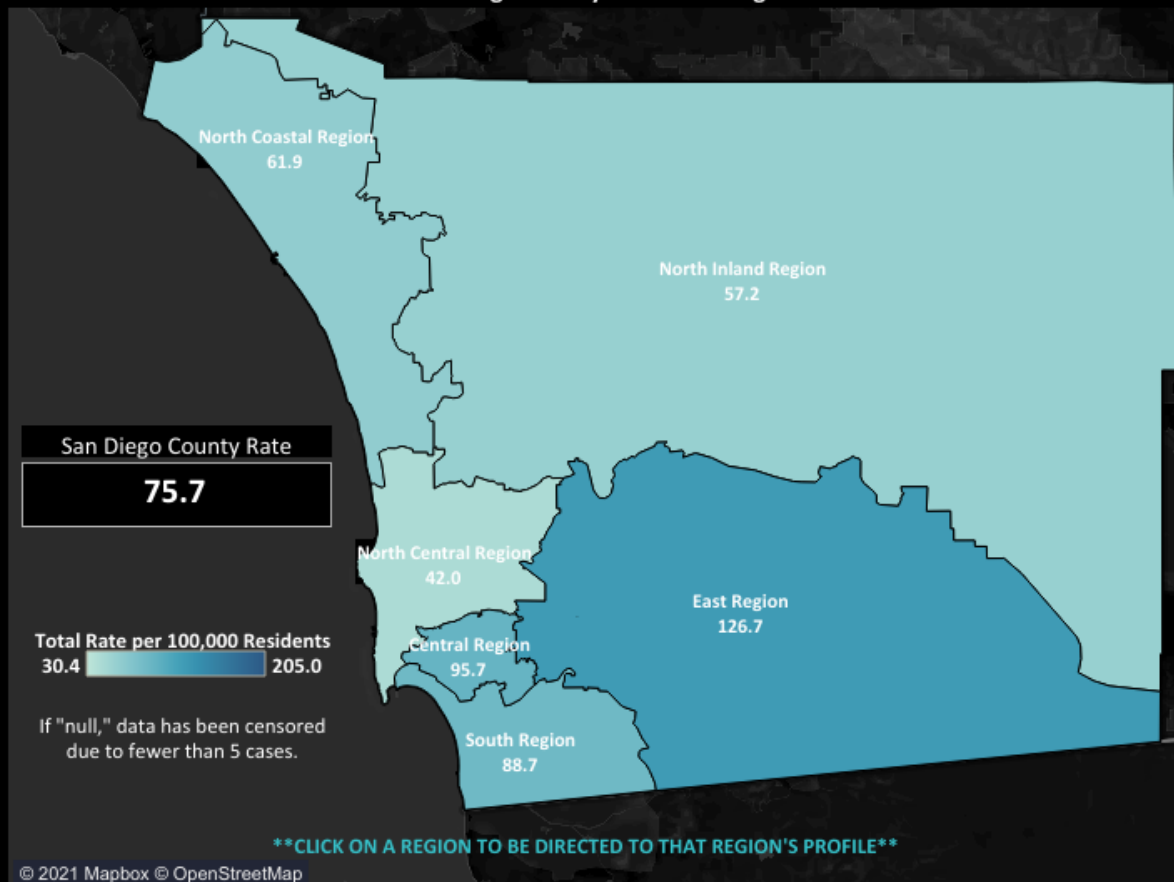
Total Rate (per 100,000 residents) and Total Count of
COPD/Chronic Lower Respiratory Diseases Hospitalization
in San Diego County and HHSA Regions

How to interpret rates:

A rate is the number of cases divided by the population, usually multiplied by a constant (100,000 in the example). For example, 987 cases, divided by a population of 654,321, would be a rate of 150.8 per 100,000 population. This means for every 100,000 people, 150-151 cases would be expected.

Socioeconomic Status

| Geography | 2021 Median Household Income |
|----------------------|------------------------------|
| Central Region | \$61,817 |
| East Region | \$77,818 |
| North Central Region | \$102,024 |
| North Coastal Region | \$93,906 |
| North Inland Region | \$98,478 |
| South Region | \$76,304 |



Median household income source: ESRI Community Analyst, 2021. Data source: California Department of Public Health, Center for Health Statistics, Office of Health Information and Research, Vital Records Business Intelligence System (VRBIS); California Office of Statewide Health Planning & Development (OSHPD), Emergency Department and Patient Discharge data, 2019. All conditions are a primary diagnosis unless preceded by "Any Mention". "Any Mention" diagnoses are any mention of the condition in the discharge record. Data suppressed for counts < 5. Prepared by: County of San Diego, Health and Human Services Agency, Public Health Services, Community Health Statistics Unit, 10/26/2021.



LIVE WELL
SAN DIEGO



Chronic Lower Respiratory Disease Central Region Subregional Areas

2019 COMMUNITY PROFILES

HEALTH CONDITION RATE PER 100,000 RESIDENTS BY CENTRAL REGION SUBREGIONAL AREAS (SRA)

Condition
COPD/Chronic Lower Respir..

Outcome
Hospitalization

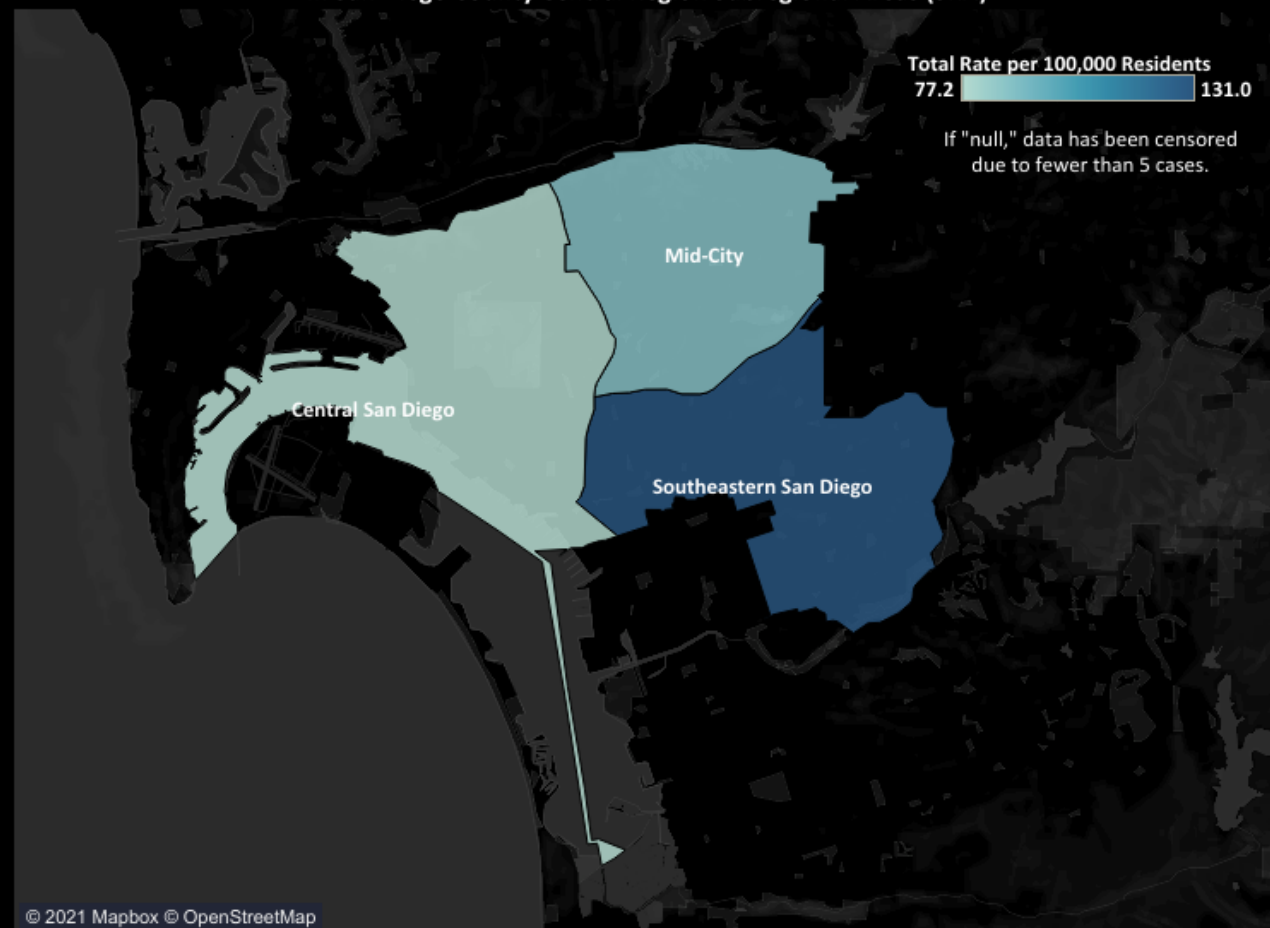
Total Rate (per 100,000 residents) and Total Count of
COPD/Chronic Lower Respiratory Diseases Hospitalization
in San Diego County Central Region Subregional Areas (SRA)

How to interpret rates:

A rate is the number of cases divided by the population, usually multiplied by a constant (100,000 in the example). For example, 987 cases, divided by a population of 654,321, would be a rate of 150.8 per 100,000 population. This means for every 100,000 people, 150-151 cases would be expected.

Socioeconomic Status

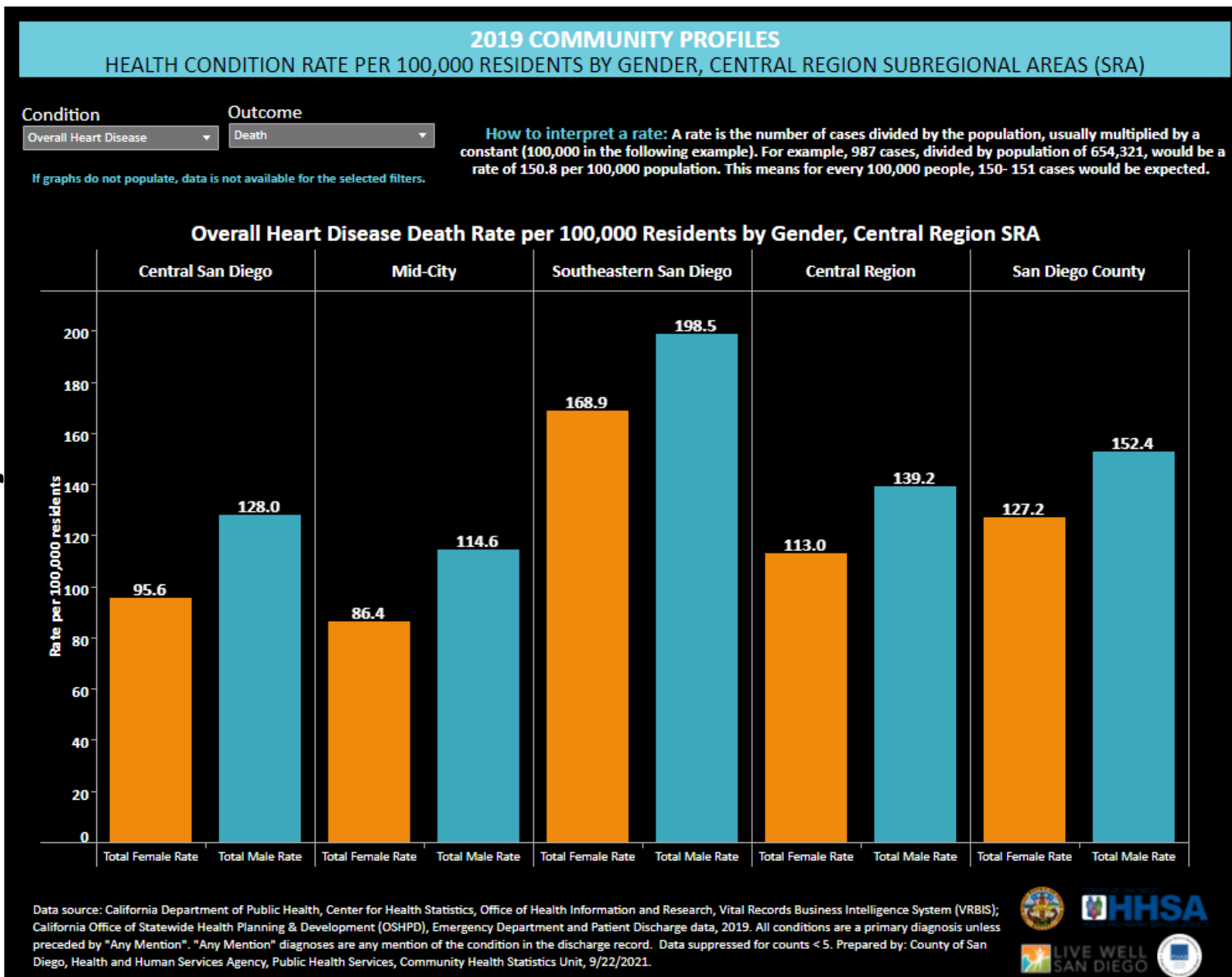
| Geography | 2021 Median Household Income |
|------------------------|------------------------------|
| Central San Diego | \$71,660 |
| Mid-City | \$52,650 |
| Southeastern San Diego | \$62,390 |



Median household income source: ESRI Community Analyst, 2021. Data source: California Department of Public Health, Center for Health Statistics, Office of Health Information and Research, Vital Records Business Intelligence System (VRBIS); California Office of Statewide Health Planning & Development (OSHPD), Emergency Department and Patient Discharge data, 2019. All conditions are a primary diagnosis unless preceded by "Any Mention". "Any Mention" diagnoses are any mention of the condition in the discharge record. Data suppressed for counts < 5. Prepared by: County of San Diego, Health and Human Services Agency, Public Health Services, Community Health Statistics Unit, 9/22/2021.



Heart Disease Central Region Subregional Area and by Gender



Asthma

East Region – Lemon Grove

by ALL lenses of Health Equity

2019 COMMUNITY PROFILES

HEALTH CONDITION RATE PER 100,000 RESIDENTS BY RACE/ETHNICITY, GENDER, SOCIOECONOMIC STATUS, AND AGE BY EAST REGION SUBREGIONAL AREA (SRA)

East Region
Subregional Area

Lemon Grove

Condition

Asthma

Outcome

ED Discharge

If graphs do not populate, data
is not available for the
selected filters.

Note:

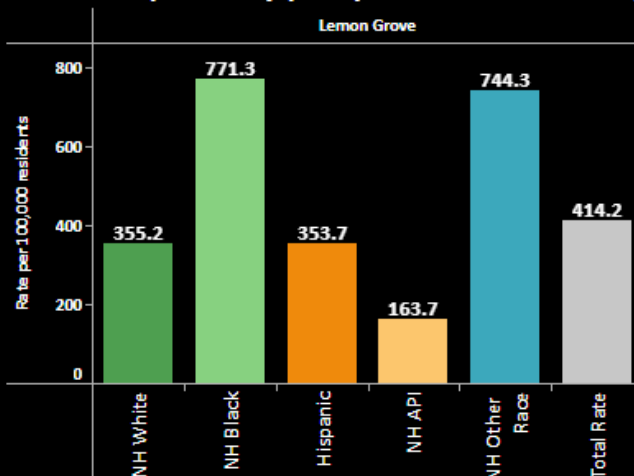
NH: Non-Hispanic

API: Asian/Pacific Islander

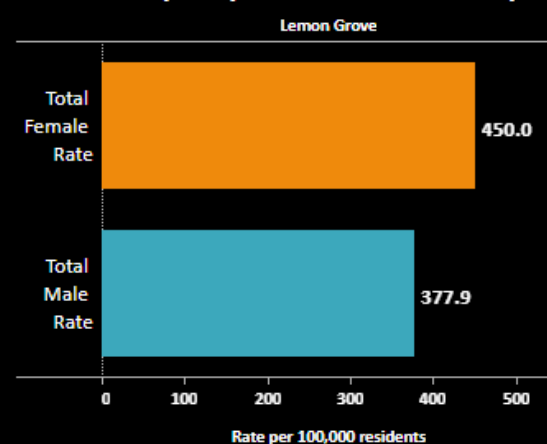
Other Race: American Indian/Alaska
Native (AIAN), multiple races, or
some other race

How to interpret a rate:
A rate is the number of cases
divided by the population,
usually multiplied by a constant
(100,000 in the following
example). For example, 987
cases, divided by population of
654,321, would be a rate of
150.8 per 100,000 population.
This means for every 100,000
people, 150-151 cases would
be expected.

Race/Ethnicity (rate per 100,000 residents)



Gender (rate per 100,000 residents)



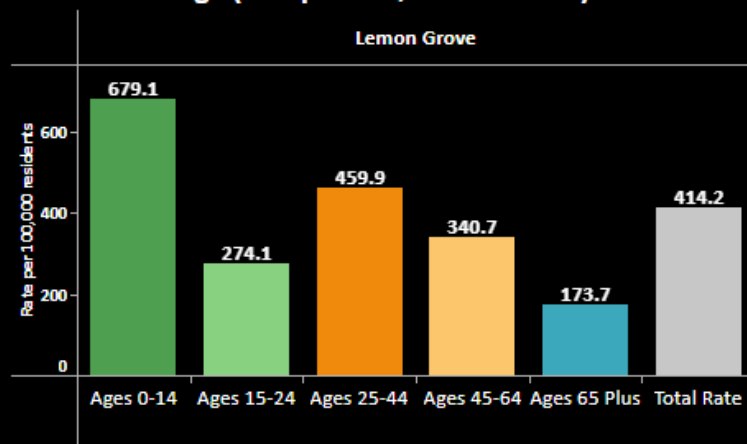
Socioeconomic Status

Geography

2021 Median
Household Income

Lemon Grove \$66,691

Age (rate per 100,000 residents)



Median household income source: ESRI Community Analyst, 2021. Data source: California Department of Public Health, Center for Health Statistics, Office of Health Information and Research, Vital Records Business Intelligence System (VRBIS); California Office of Statewide Health Planning & Development (OSHPD), Emergency Department and Patient Discharge data, 2019. All conditions are a primary diagnosis unless preceded by "Any Mention". "Any Mention" diagnoses are any mention of the condition in the discharge record. Data suppressed for counts < 5. Prepared by: County of San Diego, Health and Human Services Agency, Public Health Services, Community Health Statistics Unit, 9/22/2021.



LIVE WELL SAN DIEGO

Building
Better
Health

Living
Safely

Thriving



- *Live Well San Diego* is 1 vision of a region that is building better health, living safely, and thriving.
- These three components are achieved through 4 strategic approaches.
- Success is measured through 5 areas of influence and 10 indicators.



The 5 Conditions of Collective Impact

1

Common Agenda

- **Common understanding** of the problem
- **Shared vision** for change

2

Shared Measurement

- **Collecting data** and **measuring results**
- Focus on **performance management**
- **Shared accountability**

3

Mutually Reinforcing Activities

- **Differentiated approaches**
- **Coordination** through joint plan of action

4

Continuous Communication

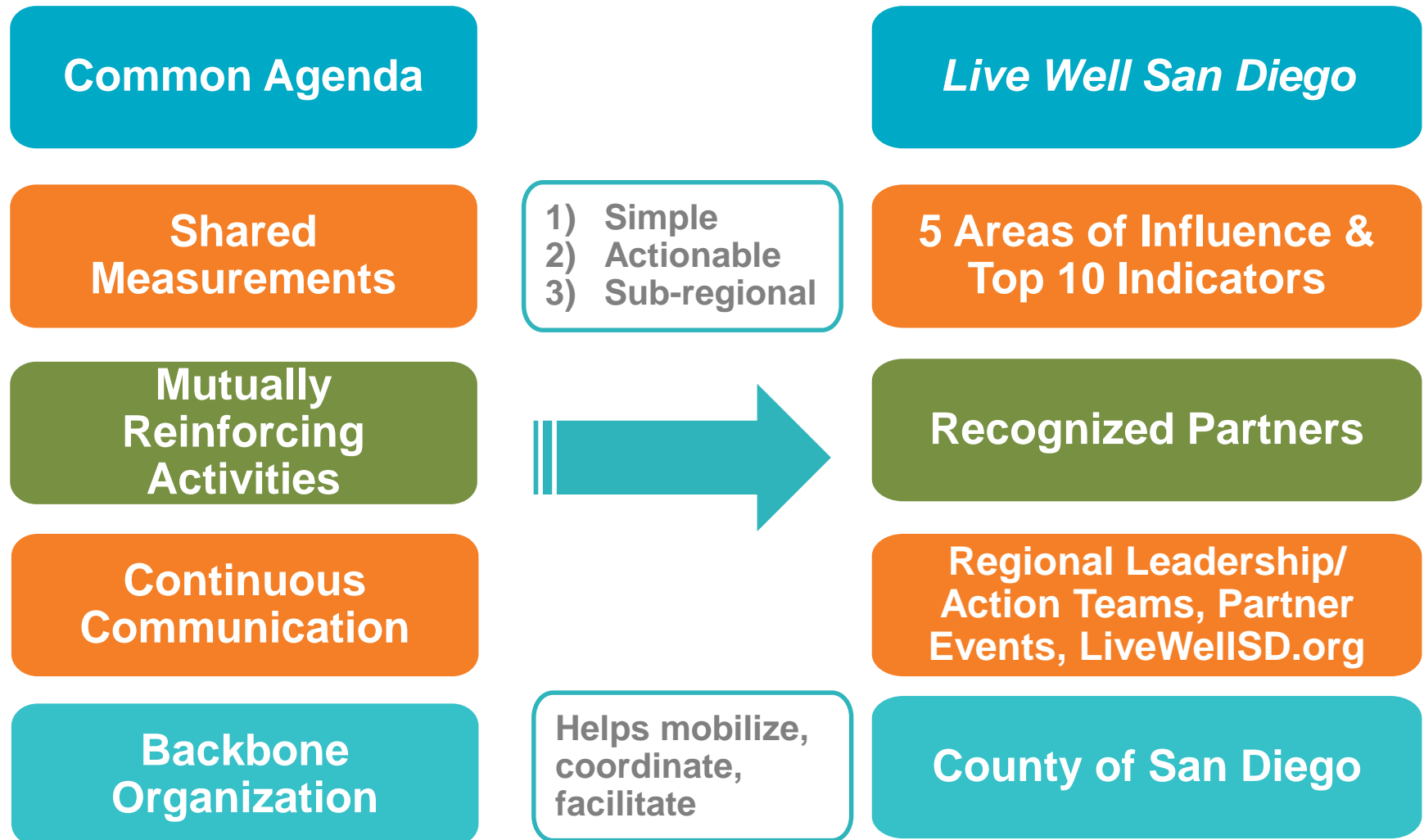
- **Consistent** and **open communication**
- Focus on **building trust**

5

Backbone Support

- Separate organization(s) with **staff**
- Resources and skills to **convene** and **coordinate** participating organizations

5 CONDITIONS OF COLLECTIVE IMPACT



2020 LIVE WELL SAN DIEGO IMPACT REPORT



HEALTH

Enjoying good health and expecting to live a full life

Life Expectancy

82.7

Average number of years a baby born today is expected to live.

Quality of Life

94.9%

Percent of Population Sufficiently Healthy to Live Independently.



KNOWLEDGE

Learning throughout the lifespan

Education

87.4%

Percent of population ages ≥ 25 with at least a HS diploma or Equivalent.



STANDARD OF LIVING

Having enough resources for a quality life

Unemployment Rate

7.3%

Percent of the total labor force that is unemployed.

Income

57.4%

Percent of population spending $< 1/3$ of household income on housing.



COMMUNITY

Living in a clean and safe neighborhood

Security

1992.1

Number of crimes per 100,000 people, reported to law enforcement.

Physical Environment

13.4%

Percent of days air quality rated as unhealthy for sensitive populations.

Built Environment

62.0%

Percent of population living within 1/4 mile of a park or community space.



SOCIAL

Helping each other to live well

Vulnerable Populations

37.6%

Percent of population within $\leq 200\%$ of poverty line who've experienced food insecurity.

Community Involvement

25.5%

Percent of population who volunteer.

Select area from the drop-down below. If data is not available, a "(Blank)" will appear.

Select Area :

San Diego County

CHULA VISTA



LIVE WELL
SAN DIEGO



HEALTH

Enjoying good health and expecting to live a full life

Life Expectancy

76.6

Average number of years a baby born today is expected to live.

Quality of Life

92.5%

Percent of Population Sufficiently Healthy to Live Independently.



KNOWLEDGE

Learning throughout the lifespan

Education

72.4%

Percent of population ages ≥ 25 with at least a HS diploma or Equivalent.



STANDARD OF LIVING

Having enough resources for a quality life

Unemployment Rate

12.2%

Percent of the total labor force that is unemployed.

Income

54.6%

Percent of population spending $< 1/3$ of household income on housing.



COMMUNITY

Living in a clean and safe neighborhood

Security

(Blank)

Number of crimes per 100,000 people, reported to law enforcement.

Physical Environment

(Blank)

Percent of days air quality rated as unhealthy for sensitive populations.

Built Environment

78.5%

Percent of population living within 1/4 mile of a park or community space.



SOCIAL

Helping each other to live well

Vulnerable Populations

(Blank)

Percent of population within $\leq 200\%$ of poverty line who've experienced food insecurity.

Community Involvement

(Blank)

Percent of population who volunteer.

Select area from the drop-down below. If data is not available, a "(Blank)" will appear.

Select Area :

Chula Vista



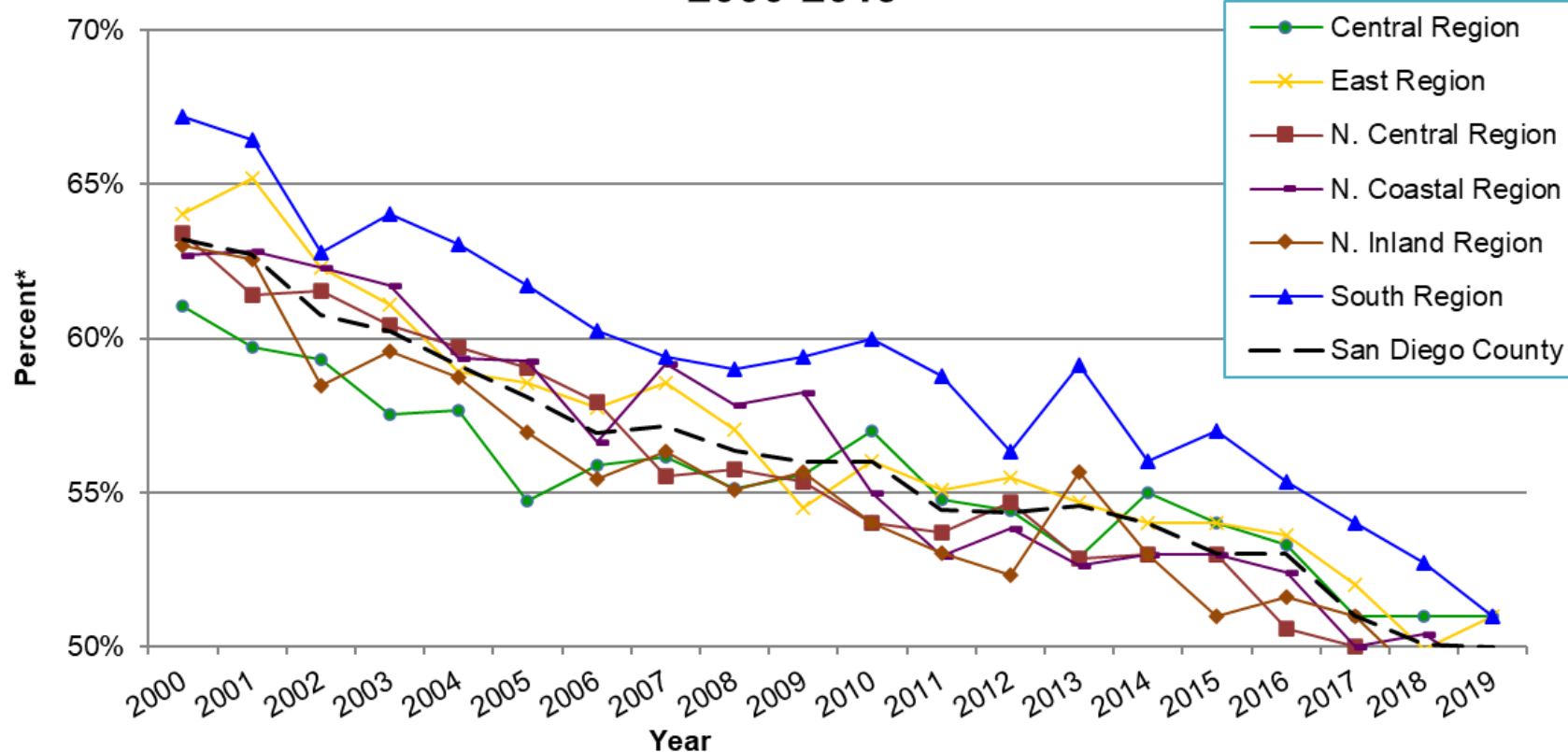
SAN DIEGO COUNTY

3-4-50: CHRONIC DISEASE DEATHS



Percentages, Trend 2000-2019

**3-4-50 Death[†] Percentages
Among San Diego County Residents,
2000-2019**



*3-4-50 Deaths as a percentage of all cause deaths.

†3-4-50 Deaths include Stroke, Coronary Heart Disease (CHD), Diabetes, COPD, Asthma, and Cancer. Beginning with 2017, COPD includes chronic lower respiratory diseases (COPD/chronic lower respiratory diseases).

§Percentages not calculated for fewer than 5 events. Percentages not calculated in cases where zip code is unknown.

Source: California Department of Public Health, 2000-2013 Death Statistical Master Files, 2014-2019 California Vital Records Business Intelligence System (VRBIS).

Prepared by: County of San Diego, Health and Human Services Agency, Public Health Services, Community Health Statistics Unit, 2021.

CENTRAL REGION

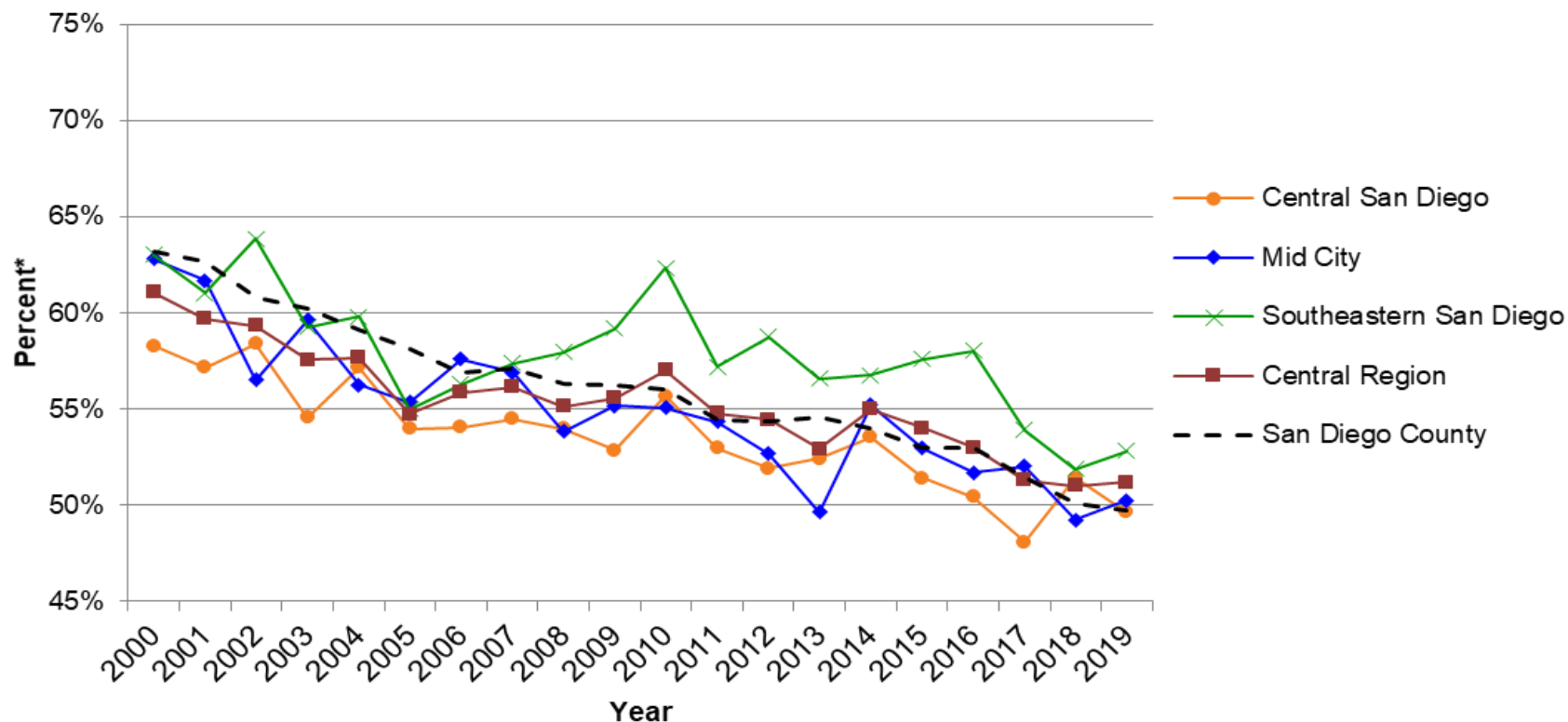
3-4-50: CHRONIC DISEASE DEATHS



LIVE WELL
SAN DIEGO

Percentages, Trend 2000-2019

3-4-50 Death† Percentages Among San Diego County Residents - Central Region, 2000-2019



*3-4-50 Deaths as a percentage of all cause deaths.

†3-4-50 Deaths include Stroke, Coronary Heart Disease (CHD), Diabetes, COPD, Asthma, and Cancer. Beginning with 2017, COPD includes chronic lower respiratory diseases (COPD/chronic lower respiratory diseases).

§Percentages not calculated for fewer than 5 events. Percentages not calculated in cases where zip code is unknown.

Source: California Department of Public Health, 2000-2013 Death Statistical Master Files, 2014-2019 California Vital Records Business Intelligence System (VRBIS).

Prepared by: County of San Diego, Health and Human Services Agency, Public Health Services, Community Health Statistics Unit, 2021.

SOUTH REGION

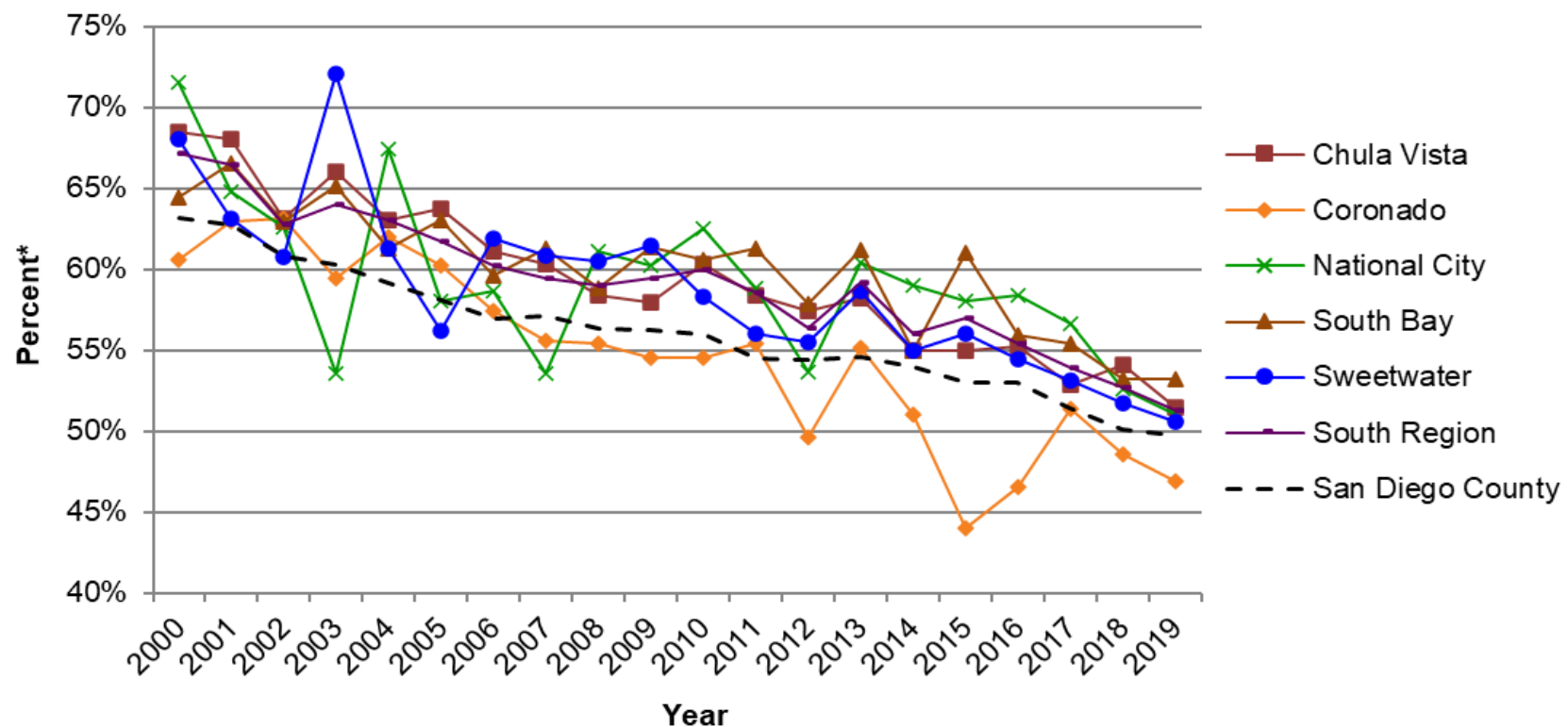
3-4-50: CHRONIC DISEASE DEATHS



LIVE WELL
SAN DIEGO

Percentages, Trend 2000-2019

3-4-50 Death† Percentages Among San Diego County Residents South Region, 2000-2019



*3-4-50 Deaths as a percentage of all cause deaths.
†3-4-50 Deaths include Stroke, Coronary Heart Disease (CHD), Diabetes, COPD, Asthma, and Cancer. Beginning with 2017, COPD includes chronic lower respiratory diseases (COPD/chronic lower respiratory diseases).
§Percentages not calculated for fewer than 5 events. Percentages not calculated in cases where zip code is unknown.
Source: California Department of Public Health, 2000-2013 Death Statistical Master Files, 2014-2019 California Vital Records Business Intelligence System (VRBIS).
Prepared by: County of San Diego, Health and Human Services Agency, Public Health Services, Community Health Statistics Unit, 2021.



County of San Diego Framework for Ending Homelessness



KEY DRIVERS

Person-Centered > Data > Collaboration > Sustainability > Equity >>

STRATEGIC DOMAINS

| | | |
|--|--|---|
| | ROOT CAUSE AND UPSTREAM PREVENTION | <ul style="list-style-type: none"> Employment programs and income supports Access to basic social services Community empowerment activities |
| | DIVERSION AND MITIGATION | <ul style="list-style-type: none"> Short-term rent and housing search assistance Mediation and legal assistance Creating alternatives to incarceration |
| | SERVICES, TREATMENT AND OUTREACH | <ul style="list-style-type: none"> Street outreach and harm reduction Clinical and social support services Housing service coordination |
| | EMERGENCY/INTERIM HOUSING AND RESOURCES | <ul style="list-style-type: none"> Assessment and coordination sites Housing navigation and transitional housing Housing vouchers |
| | PERMANENT HOUSING AND SUPPORT | <ul style="list-style-type: none"> Affordable, subsidized housing Ongoing physical and behavioral health support Linkages to healthcare |

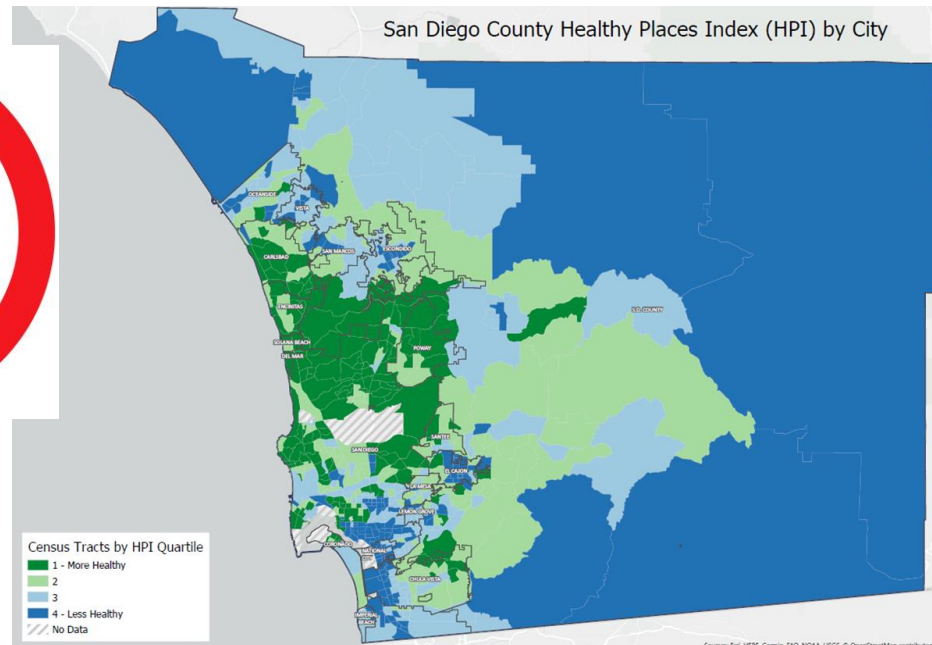
County of San Diego



IMPLICIT BIAS IN HEALTH CARE



San Diego County Healthy Places Index (HPI) by City



Sources: Esri, HERE, Garmin, FAO, NOAA, USGS, © OpenStreetMap contributors, and the GIS User Community

Thank you



Elizabeth Hernandez, Ph.D.
Acting Director,
Public Health Services

Liz.Hernandez@sdcounty.ca.gov



LIVE WELL
SAN DIEGO